

# Fitting instructions

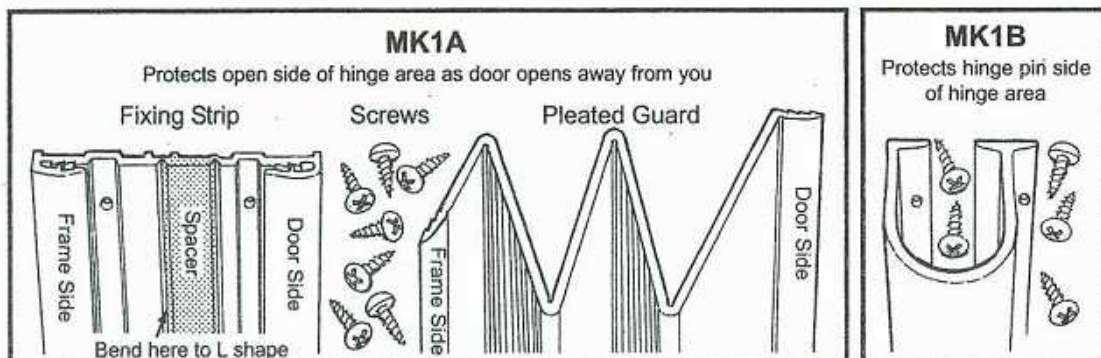
## MK1A and MK1B

Fingersafe® is easy to fit and very reliable when installed correctly. It is essential that these instructions are followed carefully. We can accept no liability or responsibility for incorrect installation. Fingersafe can be installed in 95% of today's doors; however, make sure your door is not one of the following types. If it is, please contact us for assistance; Double swing doors, Doors with rising or declining butt hinges, Sliding doors.

### Tools required for fitting Fingersafe

1. Cordless drill (or screwdriver)
2. Stanley knife (always keep blade sharp)
3. Strong scissors or tinsnips
4. Posidrive bit
5. Pencil
6. Self drilling screws for wood, metal & aluminium doors (provided)

### Components of fingersafe®

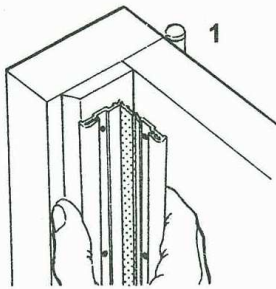


### MK1A PRE-INSTALLATION CHECKLIST

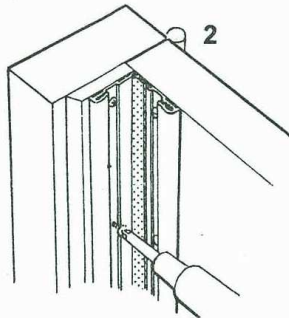
- 1 Check the stability of the door and hinges by opening the door at a 45 degree angle and gently but firmly exerting lateral and vertical pressure. This will show any instability or damage in the door or frame which must be repaired before you start. If the door has a closer attached, you must check its effectiveness. If the door closes easily without fingersafe, it will continue to do so once fingersafe is installed.
- 2 After any necessary door maintenance, bring all the tools to the side of the door that swings away from you, and pull the door closed tight
- 3 Measure from the bottom of the door to the bottom side of the frame at the top. Subtract 3/4 inch (20mm) for clearance and cut the fixing strip and pleated panel square to length if necessary.

**NO LIABILITY WHATSOEVER ACCEPTED IF THESE INSTRUCTIONS ARE NOT FOLLOWED**

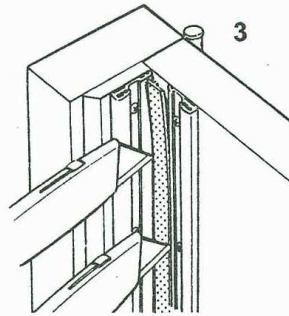
# MK1A Installation instructions for standard hinged door



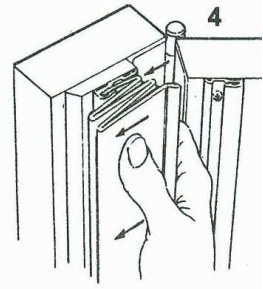
When bent, hold corner of L firmly in corner of frame and door. Align with bottom of door



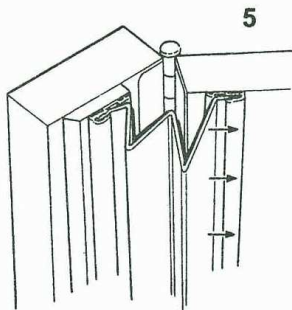
Insert TEK screws on alternating sides, keeping corners firmly in place



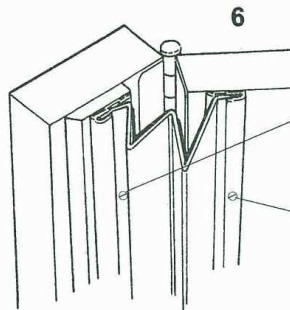
With Stanley knife separate strips at corner and remove spacer



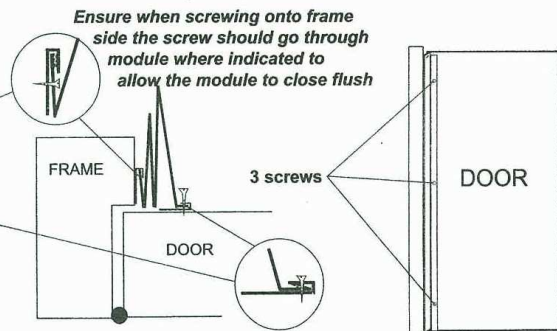
Open door 90 degrees and align 1 inch side of pleated panel to frame fixing strip. Snap in position top to bottom



Insert 3 inch panel of fingersafe in door fixing strip



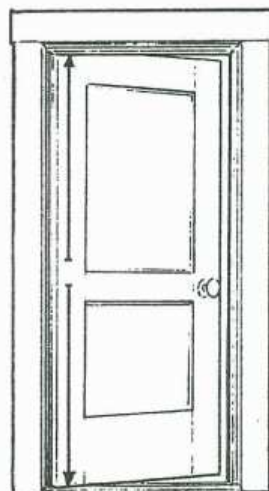
Add TEK screws through both fixing strip and fingersafe



Ensure when screwing onto frame side the screw should go through module where indicated to allow the module to close flush

Ensure when screwing into door side the screw should go through module and fixing strip as shown

BIRDS EYE VIEW Shows Fingersafe fitted with the door closed



## Fitting Tips

After installing fixing strip, the 1 inch panel must be snapped into frame fixing strip **FIRST**. See No 4

When snapping the fingersafe panels in position, 3 distinct clicks per side signal a complete installation

**THESE INSTRUCTIONS MUST BE FOLLOWED PRECISELY  
IN ORDER TO VALIDATE THE 2 YEAR GUARANTEE**